

ScienceBase Cata... → USGS Denver... → Jackson Glaci...

Jackson Glacier. Glacier National Park, Montana. Repeat photography 1912 - 2009.

View ▾

Glaciers of Glacier National Park Repeat Photography

Dates

Date Taken :

1912

Date Taken :

2009-09-03

Summary

Summary of photo on top: Glacier National Park, Montana, near the foot of Blackfoot Glacier. "Description reads: The lower end of Blackfoot Glacier, as it appeared in 1912 MJ Elrod". Courtesy of University of Montana, Mansfield Library Archives and Special Collections. Summary of photo on bottom: Jackson Glacier (formerly part of Blackfoot Glacier), Glacier National Park, Montana. Photo taken by Lisa A. McKeon, USGS. September 3, 2009. Photo Point latitude: 48.609179 Photo Point longitude: -113.684246 FYI: lat/longs may be pasted to the search bar in Google Earth to find the location.

Contacts

Data Owner :

U.S. Geological Survey (/catalog/catalogParty/show?partyId=18139), University of Montana, Mansfield Library Archives and Special Collections (/catalog/catalogParty/show?partyId=University+of+Montana%2C+Mansfield+Library+Archives+and+Special+Collections)

Contributor :



U.S. Geological Survey Glacier Field Station (/catalog/catalogParty/show?partyId=U.S.+Geological+Survey+Glacier+Field+Station)

Photographer :

Elrod, Morton J. (/catalog/catalogParty/show?partyId=Elrod%2C+Morton+J.), McKeon, Lisa A. (/catalog/catalogParty/show?partyId=McKeon%2C+Lisa+A.)

Attached Files

Click on title to download individual files attached to this item.

 Jackson 1912_2009.jpg		730.76 KB	image/jpeg
---	---	-----------	------------



Related External Resources

Type: ScienceBase Repository

Jackson Glacier. Glacier National Park, Montana. 1911.	https://www.sciencebase.gov/catalog/item/5f1ae26682cef313ed87fe6b (https://www.sciencebase.gov/catalog/item/5f1ae26682cef313ed87fe6b)
Jackson Glacier. Glacier National Park, Montana. 2009	https://www.sciencebase.gov/catalog/item/editForm/5f296a5c82cef313ed9e826c (https://www.sciencebase.gov/catalog/item/editForm/5f296a5c82cef313ed9e826c)

Type: Web Link

University of Montana, Mansfield Library Archives and Special Collections	https://www.lib.umt.edu/asc/default.php (https://www.lib.umt.edu/asc/default.php)
USGS Retreat of Glaciers in Glacier National Park	https://www.usgs.gov/centers/norock/science/retreat-glaciers-glacier-national-park?qt-science_center_objects=0#qt-science_center_objects (https://www.usgs.gov/centers/norock/science/retreat-glaciers-glacier-national-park?qt-science_center_objects=0#qt-science_center_objects)
USGS Repeat Photography Project	https://www.usgs.gov/centers/norock/science/repeat-photography-project?qt-science_center_objects=7#qt-science_center_objects (https://www.usgs.gov/centers/norock/science/repeat-photography-project?qt-science_center_objects=7#qt-science_center_objects)

Material Request Instructions

Available in the U.S. Geological Survey Denver Library Photographic Collection, Glacier National Park digital collection, 2018 DENPH0011.

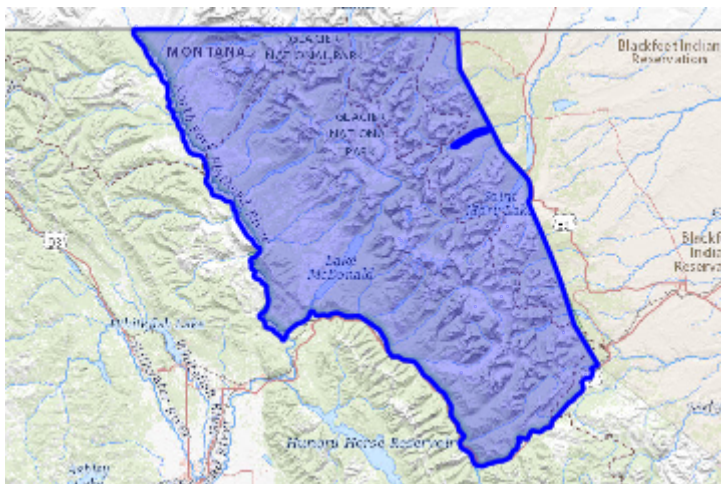
Rights

All images taken by the USGS are considered to be in the U.S. public domain. For further information on the USGS Information Policies and Instructions, refer to the Copyrights and Credits section on this web page: <https://www.usgs.gov/information-policies-and-instructions/copyrights-and-credits> Images that were acquired from the University of Montana, Mansfield Library Archives and Special Collections may be protected by copyright. Permission may be required for use, <https://www.lib.umt.edu/asc/default.php>

Preview Image



Map » (</catalog/item/imap/5f3acf4382ce8df5b6c40fe2>)



(</catalog/item/imap/5f3acf4382ce8df5b6c40fe2>)

Spatial Services

ScienceBase WMS :

<https://www.sciencebase.gov/catalog/item/5f3acf4382ce8df5b6c40fe2> 

Communities

- Northern Rocky Mountain Science Center

Tags

Categories : Image (/catalog/items?q=&filter=browseCategory%3DImage)

category : Glaciers (/catalog/items?q=&filter=tags%3DGlaciers), National Parks (/catalog/items?q=&filter=tags%3DNational+Parks), Photographers (/catalog/items?q=&filter=tags%3DPhotographers)

collection : Blackfoot Glacier (/catalog/items?q=&filter=tags%3DBlackfoot+Glacier), Elrod, Morton J. Collection (/catalog/items?q=&filter=tags%3DElrod%2C+Morton+J.+Collection), Glacier National Park (/catalog/items?q=&filter=tags%3DGlacier+National+Park), Glaciers of Glacier National Park Repeat Photography (/catalog/items?q=&filter=tags%3DGlaciers+of+Glacier+National+Park+Repeat+Photography), Jackson Glacier (/catalog/items?q=&filter=tags%3DJackson+Glacier), McKeon, L.A. Collection (/catalog/items?q=&filter=tags%3DMcKeon%2C+L.A.+Collection)

label : digital (/catalog/items?q=&filter=tags%3Ddigital)

Place : Glacier National Park, Montana (/catalog/items?q=&filter=tags%3DGlacier+National+Park%2C+Montana)

Types : Map Service (/catalog/items?q=&filter=browseType%3DMap+Service), OGC WFS Layer (/catalog/items?q=&filter=browseType%3DOGC+WFS+Layer), OGC WMS Layer (/catalog/items?q=&filter=browseType%3DOGC+WMS+Layer), OGC WMS Service (/catalog/items?q=&filter=browseType%3DOGC+WMS+Service)

Provenance

Data source : Input directly

Additional Information

Identifiers

Type	Scheme	Key
Photo Number	https://www.sciencebase.gov/vocab/category/item/identifier	Jackson 1912_2009

Item Actions

View Item as ...

JSON (/catalog/item/5f3acf4382ce8df5b6c40fe2?format=json)

ATOM (/catalog/item/5f3acf4382ce8df5b6c40fe2?format=atom)

ISO XML (/catalog/item/5f3acf4382ce8df5b6c40fe2?format=isohtml)

Save Item as ...

[JSON \(/catalog/item/download/5f3acf4382ce8df5b6c40fe2?format=json\)](/catalog/item/download/5f3acf4382ce8df5b6c40fe2?format=json)

[FGDC \(/catalog/item/download/5f3acf4382ce8df5b6c40fe2?format=fgdc\)](/catalog/item/download/5f3acf4382ce8df5b6c40fe2?format=fgdc)

[MODS XML \(/catalog/item/download/5f3acf4382ce8df5b6c40fe2?format=modsxm\)](/catalog/item/download/5f3acf4382ce8df5b6c40fe2?format=modsxm)

[ISO XML \(/catalog/item/download/5f3acf4382ce8df5b6c40fe2?format=iso\)](/catalog/item/download/5f3acf4382ce8df5b6c40fe2?format=iso)

View Item...

[Metrics \(/catalog/item/metrics/5f3acf4382ce8df5b6c40fe2\)](/catalog/item/metrics/5f3acf4382ce8df5b6c40fe2)

App Version: 2.185.1

[DOI Privacy Policy \(https://www.doi.gov/privacy\)](https://www.doi.gov/privacy) | [Legal \(https://www.usgs.gov/laws/policies_notices.html\)](https://www.usgs.gov/laws/policies_notices.html) |

[Accessibility \(https://www2.usgs.gov/laws/accessibility.html\)](https://www2.usgs.gov/laws/accessibility.html) | [Site Map \(https://www.usgs.gov/sitemap.html\)](https://www.usgs.gov/sitemap.html) |

[Contact USGS \(https://answers.usgs.gov/\)](https://answers.usgs.gov/)

[U.S. Department of the Interior \(https://www.doi.gov/\)](https://www.doi.gov/) | [DOI Inspector General \(https://www.doi.gov/office-of-inspector-general\)](https://www.doi.gov/office-of-inspector-general) |

[White House \(https://www.whitehouse.gov/\)](https://www.whitehouse.gov/) | [E-gov \(https://www.whitehouse.gov/omb/management/egov/\)](https://www.whitehouse.gov/omb/management/egov/) |

[No Fear Act \(https://www.doi.gov/pmb/eeo/no-fear-act\)](https://www.doi.gov/pmb/eeo/no-fear-act) | [FOIA \(https://www2.usgs.gov/foia\)](https://www2.usgs.gov/foia)