

ScienceBase Cata... → USGS Denver... → Grinnell Glaci...

Grinnell Glacier. Glacier National Park, Montana. Repeat photography 1910 - 2013.

 View ▾

Glaciers of Glacier National Park Repeat Photography

Dates

Date Taken :

1910

Date Taken :

2013-09-12

Summary

Summary of left photo: Grinnell Glacier and Mount Gould. Glacier National Park, Montana. 1910.

Description with photo reads: 'This view overlooks Grinnell glacier, taken from the col, in the Garden Wall, at the end of the footpath leading up from the Garden Wall trail. A small portion of the upper glacier is shown, resting on a ledge high above the lower glacier. Only part of the lower glacier is visible, but the view shows the greatly crevassed surface, with clean snow surface next [to] the mountain. The surface is not even, as one might suppose from the view. The two dark streaks about the center are evidence of depression on the surface, wherein is a large visible portion. It is estimated that the ice was 150 to 200 feet thicker, [...]

Contacts

Data Owner :

U.S. Geological Survey (/catalog/catalogParty/show?partyId=18139), University of Montana, Mansfield Library Archives and Special Collections (/catalog/catalogParty/show?partyId=University+of+Montana%2C+Mansfield+Library+Archives+and+Special+Collections)

Contributor :

U.S. Geological Survey Glacier Field Station (/catalog/catalogParty/show?partyId=U.S.+Geological+Survey+Glacier+Field+Station)

Photographer :

Fred Kiser (/catalog/catalogParty/show?partyId=Fred+Kiser), Lisa McKeon (/catalog/catalogParty/show?partyId=Lisa+McKeon)

Attached Files

Click on title to download individual files attached to this item.

PLAINTIFFS'
EXHIBIT

P62

 Grinnell 1910_2013.jpg		444.47 KB	image/jpeg
---	--	-----------	------------

Related External Resources

Type: ScienceBase Repository

Grinnell Glacier. Glacier National Park, Montana. 1910.	https://www.sciencebase.gov/catalog/item/5f208bd682cef313ed93c2fa (https://www.sciencebase.gov/catalog/item/5f208bd682cef313ed93c2fa)
Grinnell Glacier. Glacier National Park, Montana. 2013.	https://www.sciencebase.gov/catalog/item/5f23070382cef313ed94d86e (https://www.sciencebase.gov/catalog/item/5f23070382cef313ed94d86e)

Type: Web Link

University of Montana, Mansfield Library Archives and Special Collections	https://www.lib.umt.edu/asc/default.php (https://www.lib.umt.edu/asc/default.php)
USGS Retreat of Glaciers in Glacier National Park	https://www.usgs.gov/centers/norock/science/retreat-glaciers-glacier-national-park?qt-science_center_objects=0#qt-science_center_objects (https://www.usgs.gov/centers/norock/science/retreat-glaciers-glacier-national-park?qt-science_center_objects=0#qt-science_center_objects)
USGS Repeat Photography Project	https://www.usgs.gov/centers/norock/science/repeat-photography-project?qt-science_center_objects=7#qt-science_center_objects (https://www.usgs.gov/centers/norock/science/repeat-photography-project?qt-science_center_objects=7#qt-science_center_objects)

Material Request Instructions

Available in the U.S. Geological Survey Denver Library Photographic Collection, Glacier National Park digital collection, 2018 DENPH0011.

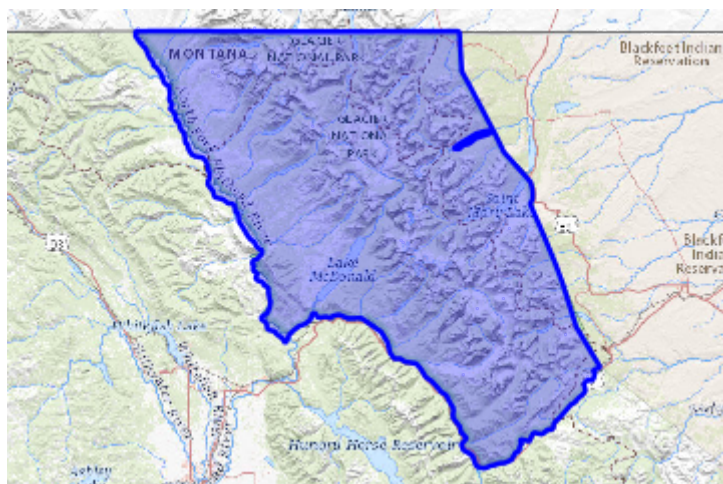
Rights

All images taken by the USGS are considered to be in the U.S. public domain. For further information on the USGS Information Policies and Instructions, refer to the Copyrights and Credits section on this web page: <https://www.usgs.gov/information-policies-and-instructions/copyrights-and-credits> Images that were acquired from the University of Montana, Mansfield Library Archives and Special Collections may be protected by copyright. Permission may be required for use, <https://www.lib.umt.edu/asc/default.php>

Preview Image



Map » (</catalog/item/imap/5f2c764782ceae4cb3c2d0b1>)



(</catalog/item/imap/5f2c764782ceae4cb3c2d0b1>)

Spatial Services

ScienceBase WMS :

<https://www.sciencebase.gov/cata>



Communities

- Northern Rocky Mountain Science Center

Tags

Categories : Image (</catalog/items?q=&filter=browseCategory%3DImage>)

category :

Glaciers (/catalog/items?q=&filter=tags%3DGlaciers), National Parks (/catalog/items?q=&filter=tags%3DNational+Parks), Photographers (/catalog/items?q=&filter=tags%3DPhotographers)

collection : Glacier National Park (/catalog/items?q=&filter=tags%3DGlacier+National+Park), Glaciers of Glacier National Park Repeat Photography (/catalog/items?q=&filter=tags%3DGlaciers+of+Glacier+National+Park+Repeat+Photography), Grinnell Glacier (/catalog/items?q=&filter=tags%3DGrinnell+Glacier), Kiser, F. Collection (/catalog/items?q=&filter=tags%3DKiser%2C+F.+Collection), McKeon, L.A. Collection (/catalog/items?q=&filter=tags%3DMcKeon%2C+L.A.+Collection)

Place : Glacier National Park, Montana (/catalog/items?q=&filter=tags%3DGlacier+National+Park%2C+Montana)

Types : Map Service (/catalog/items?q=&filter=browseType%3DMap+Service), OGC WFS Layer (/catalog/items?q=&filter=browseType%3DOGC+WFS+Layer), OGC WMS Layer (/catalog/items?q=&filter=browseType%3DOGC+WMS+Layer), OGC WMS Service (/catalog/items?q=&filter=browseType%3DOGC+WMS+Service)

Provenance

Data source : Input directly

Additional Information

Identifiers

Type	Scheme	Key
Photo Number	https://www.sciencebase.gov/vocab/category/item/identifier	Grinnell 1910_2013

Item Actions

View Item as ...

JSON (/catalog/item/5f2c764782ceae4cb3c2d0b1?format=json)

ATOM (/catalog/item/5f2c764782ceae4cb3c2d0b1?format=atom)

ISO XML (/catalog/item/5f2c764782ceae4cb3c2d0b1?format=isohtml)

Save Item as ...

JSON (/catalog/item/download/5f2c764782ceae4cb3c2d0b1?format=json)

FGDC (/catalog/item/download/5f2c764782ceae4cb3c2d0b1?format=fgdc)

MODS XML (/catalog/item/download/5f2c764782ceae4cb3c2d0b1?format=modxml)

[ISO XML \(/catalog/item/download/5f2c764782ceae4cb3c2d0b1?format=iso\)](/catalog/item/download/5f2c764782ceae4cb3c2d0b1?format=iso)

View Item...

[Metrics \(/catalog/item/metrics/5f2c764782ceae4cb3c2d0b1\)](/catalog/item/metrics/5f2c764782ceae4cb3c2d0b1)

App Version: 2.185.0

[DOI Privacy Policy \(https://www.doi.gov/privacy\)](https://www.doi.gov/privacy) | [Legal \(https://www.usgs.gov/laws/policies_notices.html\)](https://www.usgs.gov/laws/policies_notices.html) |

[Accessibility \(https://www2.usgs.gov/laws/accessibility.html\)](https://www2.usgs.gov/laws/accessibility.html) | [Site Map \(https://www.usgs.gov/sitemap.html\)](https://www.usgs.gov/sitemap.html) |

[Contact USGS \(https://answers.usgs.gov/\)](https://answers.usgs.gov/)

[U.S. Department of the Interior \(https://www.doi.gov/\)](https://www.doi.gov/) | [DOI Inspector General \(https://www.doiig.gov/\)](https://www.doiig.gov/) |

[White House \(https://www.whitehouse.gov/\)](https://www.whitehouse.gov/) | [E-gov \(https://www.whitehouse.gov/omb/management/egov/\)](https://www.whitehouse.gov/omb/management/egov/) |

[No Fear Act \(https://www.doi.gov/pmb/eo/no-fear-act\)](https://www.doi.gov/pmb/eo/no-fear-act) | [FOIA \(https://www2.usgs.gov/foia\)](https://www2.usgs.gov/foia)